



MADE IN GERMANY



ENVIRONMENTAL TECHNOLOGIES

# AGRICULTURAL TECHNOLOGY



BETEK TUNGSTEN CARBIDE TOOLS



ENVIRONMENTAL  
TECHNOLOGIES

- AGRICULTURE
- GRADER TOOLS
- FORESTRY & RECYCLING

IN USE WORLDWIDE

# TUNGSTEN CARBIDE AND STEEL

Steel and carbide are two materials with totally different expansion coefficients when subjected to heat. Nevertheless, it is of steel and tungsten carbide that our tools are made, with tungsten carbide for the wear-resistant tip, and steel for the tool shank. Since tools reach high temperatures during use, extreme tensile stresses are generated. These stresses are absorbed by a special brazing material that joins the tungsten carbide tip to the steel section.

We have developed our own methods and systems for this brazing process, which is carried out on fully automated machines with the process covered in an inert protective gas. Manufacturing parameters are fully monitored and documented to ensure consistent quality. Afterwards, brazing shear strengths are checked to ensure that our "Masters of the construction site" lose no time due to broken tools!





# BETEK HIGH-TECH TOOLS



1

## CUSTOMER SERVICE

- Efficient, customised solutions based on flexible structures
- Personalised, quick response to customer requirements



2

## RESEARCH & DEVELOPMENT

- Quick creation of samples and prototypes
- Competitive pricing thanks to close cooperation with all production units



3

## TUNGSTEN CARBIDE MANUFACTURING

- High-purity raw materials are used for high strength
- Consistently high, pore-free tungsten carbide quality through precise process control thanks to years of experience and know-how



4

## SOLDERING PRODUCTION UNIT

Production facilities and processes specially developed to perfection by experts in the combination of tungsten carbide and steel





5

#### **AUTOMATION**

Maintaining a competitive edge on the global market thanks to a high degree of automation and flexible manufacturing facilities



6

#### **QUALITY ASSURANCE**

Continuous quality testing of the entire manufacturing chain all the way up to the installation site, in conformity with DIN ISO 9001:2000 and DIN EN ISO 14001



7

#### **TRAINING**

User training courses at BETEK or on-site for sustainable, long-term commercial success and customer satisfaction



8

#### **LOGISTICS**

Quick responses thanks to:

- the use of the very latest IT and enhanced logistics networking
- Standard products kept in stock

OUR KNOW-HOW COMBINED WITH  
STATE-OF-THE-ART PRODUCTION  
TECHNOLOGIES GUARANTEES THE  
FINEST QUALITY, MADE IN GERMANY

# BETEK TOOL SYSTEMS

## ➤ BETEK TOOL SYSTEMS TECHNOLOGY SPECIFICALLY DESIGNED FOR AGRICULTURAL APPLICATIONS

---

BETEK tungsten carbide tools are developed and tested together with the manufacturers of machines for soil cultivation and harvesting. The only tungsten carbide grades used are those that are aligned specially to the areas of use with regard to their hardness and durability. They stand out thanks to their lifetime and breakage resistance. In combination with high quality steel bodies – primarily from Austria – tool systems are built which provide excellent support to the performance of modern machines. A high degree of effectiveness is guaranteed through the balance of wear between the tungsten carbide and the steel body and thus the associated complete use of the tungsten carbide wear part.



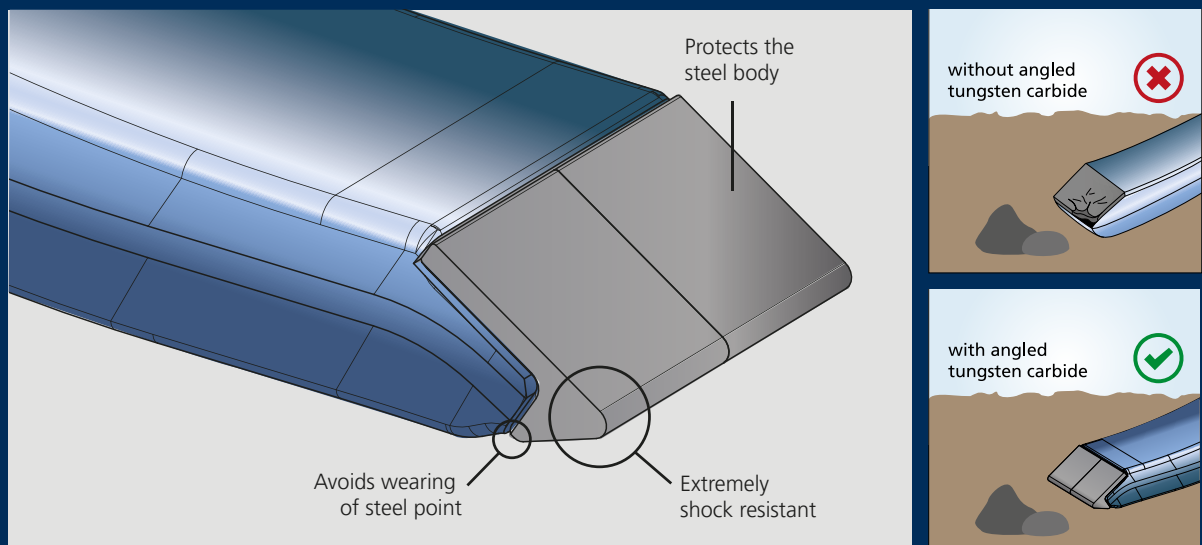


## › PROGRESS THROUGH TUNGSTEN CARBIDE WEAR PARTS FOR SOIL CULTIVATION AND SEED DRILLING

WITH BETEK TUNGSTEN CARBIDE WEAR PARTS FOR SOIL CULTIVATION AND DRILLING MACHINES YOU GAIN QUALITY, TIME AND COST RELATED BENEFITS:

- Substantially higher lifetime than conventional steel tools\*
- Constant working depth and tillage quality
- Improved penetration, lower traction requirement thanks to permanently sharp cutting edges
- No readjustment of the depth guidance due to wear
- Time and cost savings due to fewer wear part changes
- Significantly extended operating time during periods of good weather
- Optimum use of the performance of the machines
- Lower tool costs per hectare
- Cost savings due to reduced stockpiling

\*8 -10 times during soil cultivation (depending on the soil type, moisture content, machine type, working speed, working depth, machine width and mounting position)



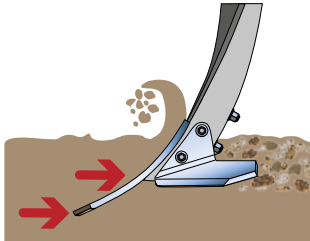
**Experience-based testimonials** from users and test partners as well as objective testreports from various trade magazines in different areas of use, are available at:

[www.betek.de/en](http://www.betek.de/en) › Products › Agricultural Technology › Reports

# COMPARATIVE POINT WEAR

## › STANDARD STEEL POINT

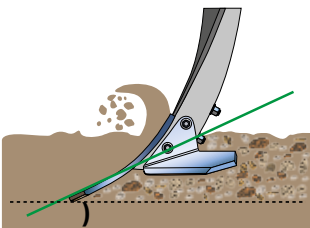
---



- Wear in length and thickness compromises functioning
- Readjustment of the depth guidance required
- Penetration rendered difficult due to worn blade
- Unsatisfactory quality work

## › STANDARD STEEL POINT: WORN

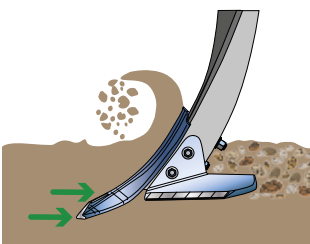
---



- Steep pitch angle
- Soil is pushed
- Soil no longer skims flowingly upwards
- High traction force requirement
- High fuel consumption
- High level of strain on the machine (frame, bearings etc.)
- Reduced working speed

## › BETEK TUNGSTEN CARBIDE POINT



















---



- No wear in length that compromises functioning, reduced wear in terms of thickness
- No readjustment of the depth guidance required
- Constantly improved penetration
- Constant high quality of work
- Considerably improved lifetime (depending on type of blade 8-10 times)
- Progress through superior efficiency



# CONTENT

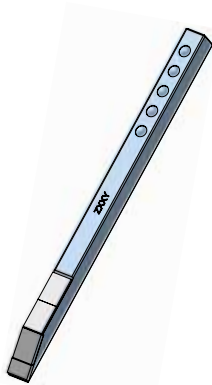
	Page
	10
	12
	14
	16
	19
	20
	21
	24
	25
	28
	32
 	34
	35
	36
	37
	38
	39



BETEK Premium tungsten carbide wear parts are marketed exclusively through our system partners. Please contact them regarding prices and sources. A link is provided on the corresponding pages of this product catalogue.

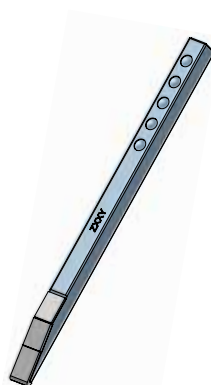
# ACTISOL

## > CULTIVATOR



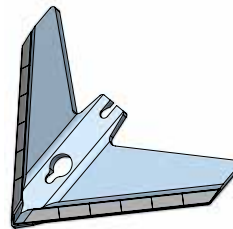
■ **BAT30**  
Point

Barre 25  
**19200005B**



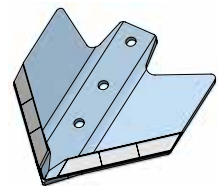
■ **BAT59**  
Point

Barre 22  
**19100005**



■ **BAT1089**  
Wing share

Ailette  
**19310013**



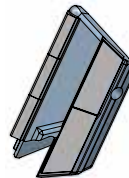
■ **BAT119**  
Wing share

Ailette  
**19300029A**



■ **BAT159**  
Sabot

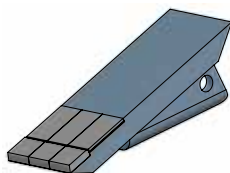
Sabot  
**19310003**



■ **BAT1076**  
Nose

Nez  
**19100007A**

## > SUBSOILER



■ **BAT49**  
Point

Agromulch  
**19300A028**

**Actisol**

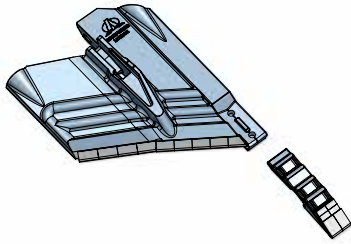






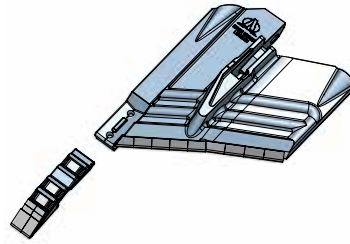
# AGRISEM

## > SUBSOILER



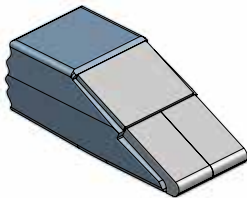
■ **BAT176 + Wing BAT262**  
Point | 50 mm, Wing left

**TCS-SOC659-611MC1**  
**TCS-SOC659W-M1**



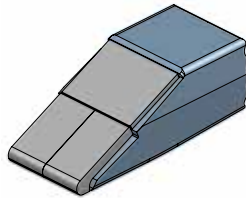
■ **BAT176 + Wing BAT263**  
Point | 50 mm, Wing right

**TCS-SOC659-611MC1**  
**TCS-SOC660W-MC1**



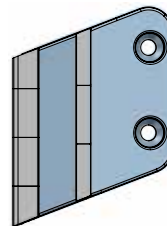
■ **BAT40**  
Point

Maximulch, Cultiplow,  
Ecoplow, Combiplow  
**TCS-SOC654W-MC3**



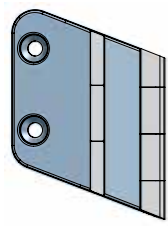
■ **BAT39**  
Point

Maximulch, Cultiplow,  
Ecoplow, Combiplow  
**TCS-SOC653W-MC3**



■ **BAT278**  
Blade left

Cultiplow - Combiplow  
**TCS-BOR28-131-C1**



■ **BAT281**  
Blade right

Cultiplow - Combiplow  
**TCS-BOR28-132-C1**

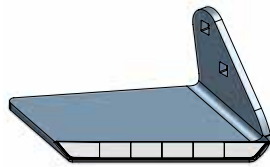


## ► CULTIVATOR



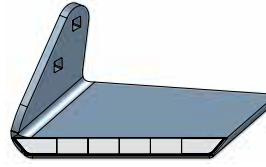
■ **BAT145**  
Point | 80 mm

Combimulch, Maximulch,  
Agromulch, Ecoplow  
**AGM11-03-551**



■ **BAT164 (right)**  
Wing share | 276 mm

Combimulch, Maximulch,  
Agromulch, Ecoplow  
**AGM11-03-552**



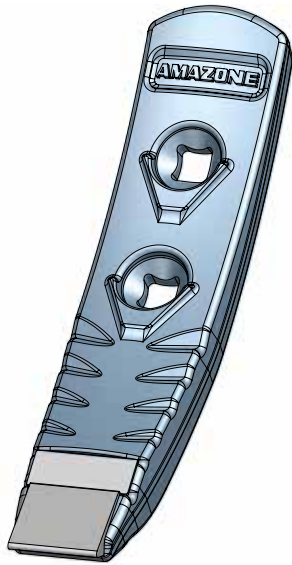
■ **BAT165 (left)**  
Wing share | 276 mm

Combimulch, Maximulch,  
Agromulch, Ecoplow  
**AGM11-03-553**



# AMAZONE

## ► CULTIVATOR



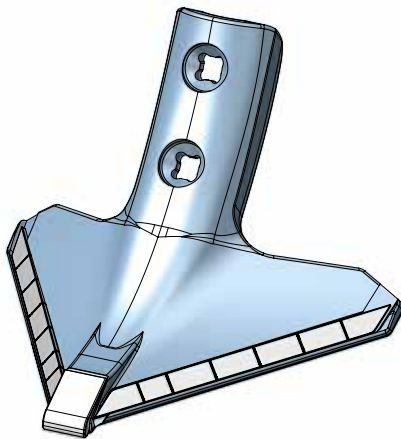
■ **BAT449**  
Point | 50 mm

Cobra  
**77000017**



■ **BAT455**  
Point | 80 mm

Cenio  
**78708860**



■ **BAT1114**  
Sweep | 220 mm

Cobra  
**77000034**



**AMAZONE**

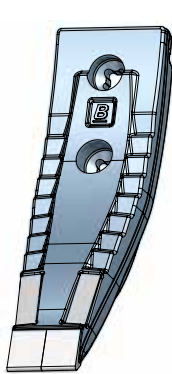






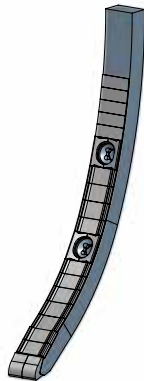
# BEDNAR

## > CULTIVATOR



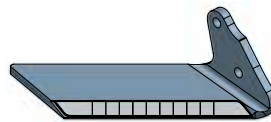
■ **BAT156**  
Point | 80 mm

Fenix  
**KM060427**



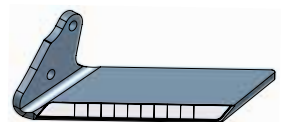
■ **BAT245**  
Point | 40 mm

Fenix  
**KM060446**



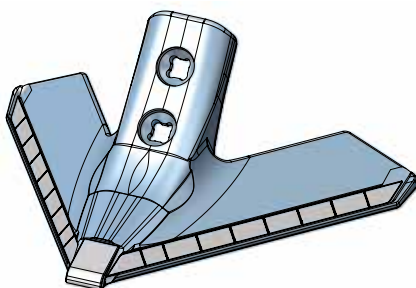
■ **BAT232 (right)**  
Wing share | 180 mm

Fenix  
**KM060448**



■ **BAT231 (left)**  
Wing share | 180 mm

Fenix  
**KM060447**



■ **BAT1100**  
Sweep | 285 mm

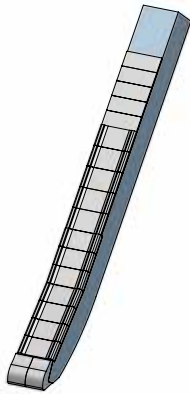
Swifter  
**KM060550**





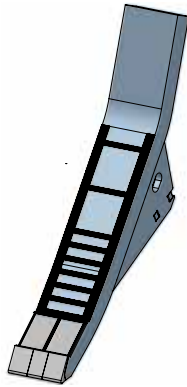
# BEDNAR

## > SUBSOILER



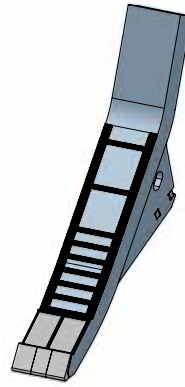
■ **BAT423**  
Point | 40 mm

Terraland  
**KM060668**



■ **BAT349**  
Point | 70 mm

Terraland  
**KM060540**



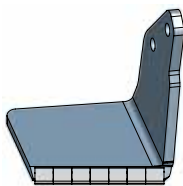
■ **BAT470**  
Point | 70 mm

Terraland  
**KM060541**



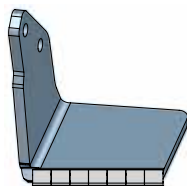
■ **BAT354**  
Point | 40 mm

Versatill  
**KM060511**



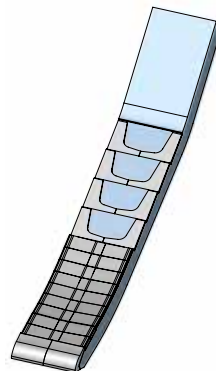
■ **BAT299 (right)**  
Wing share | 150 mm

Terraland  
**KM060483**



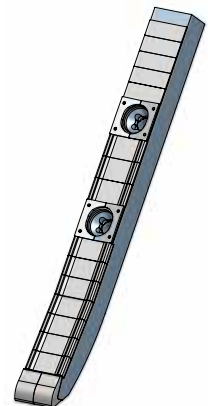
■ **BAT298 (left)**  
Wing share | 150 mm

Terraland  
**KM060484**



■ **BAT191**  
Point | 70 mm

Terraland  
**KM060400**



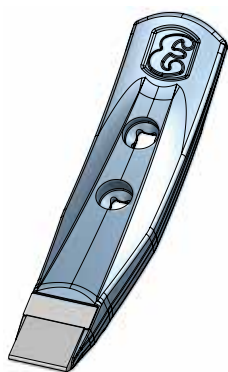
■ **BAT161**  
Point | 40 mm

Terraland  
**KM060340**

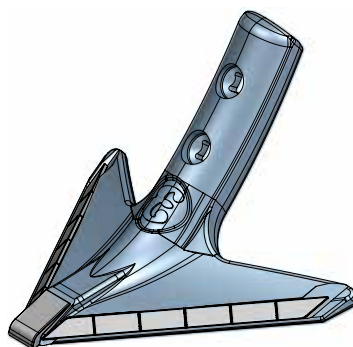


# EINBÖCK

## › CULTIVATOR

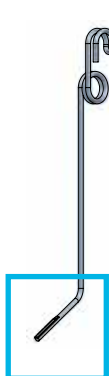


■ **BAT382**  
Point | 56 mm  
  
Taifun  
**15-167-02-H**

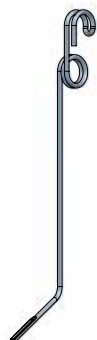


■ **BAT1083**  
Sweep | 220 mm  
  
Taifun  
**15-179-H**

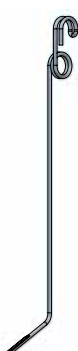
## › HARROW



■ **BAT1062**  
Harrow tine | 512x8 mm  
  
Aerostar  
**15-099-H**



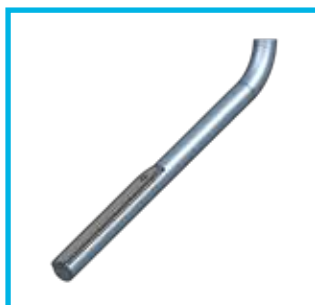
■ **BAT1063**  
Harrow tine | 509x7 mm  
  
Aerostar  
**15-002-H**



■ **BAT1064**  
Harrow tine | 648x7 mm  
  
Aerostar  
**15-257-H**



■ **BAT1065**  
Harrow tine | 587x7 mm  
  
Aerostar  
**15-338-H**

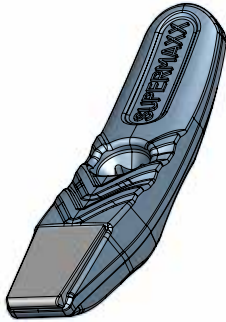


Detail



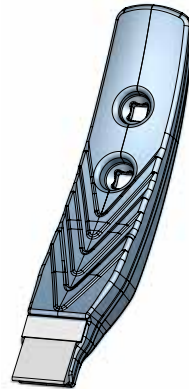
# GÜTTLER

## ► CULTIVATOR



■ **BAT254**  
Point | 40 mm

SuperMaxx  
**7200 0368**



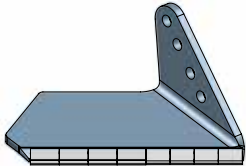
■ **BAT1217**  
Point | 56 mm

SuperMaxx  
**7200 0355**



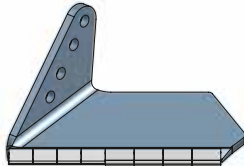
# HORSCH

## ► CULTIVATOR



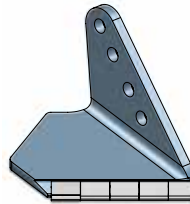
■ **BAT1027 (right)**  
Wing share | 172,5 mm

Terrano, Tiger  
**60071509**



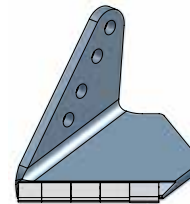
■ **BAT1028 (left)**  
Wing share | 172,5 mm

Terrano, Tiger  
**60071506**



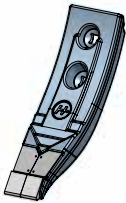
■ **BAT485 (right)**  
Wing share | 100 mm

Terrano, Tiger  
**60042284**



■ **BAT484 (left)**  
Wing share | 100 mm

Terrano, Tiger  
**60042280**



■ **BAT491**  
Point | 80 mm

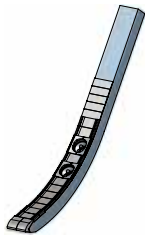
Terrano, Tiger  
**00311069**





# HORSCH

## ► STRIP TILL | SUBSOILER



■ **BAT91**  
Point | 40 mm

Focus, Terrano, Tiger  
**00311349**



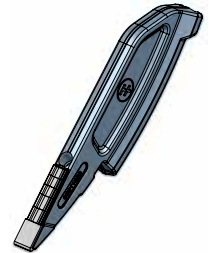
■ **BAT92**  
Point | 40 mm

Focus, Terrano, Tiger  
**00311350**



■ **BAT206**  
Point | 25 mm

Focus, Terrano, Tiger  
**00311357**



■ **BAT207**  
Guide blade | 25 mm

Focus, Terrano, Tiger  
**00311358**

## ► CULTIVATOR



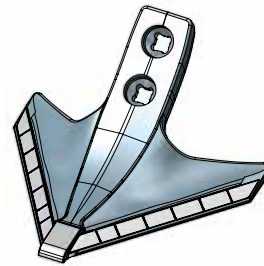
■ **BAT1040**  
Point | 50 mm

Cruiser  
**60095840**



■ **BAT333**  
Point | 80 mm

Cruiser  
**60034761**



■ **BAT1092**  
Sweep | 200 mm

Cruiser  
**00311408**



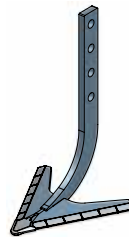
■ **BAT437**  
Point | 55 mm

Finer  
**60034846**



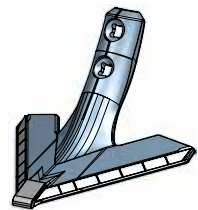
■ **BAT434**  
Sweep | 155 mm

Transformer  
**60028842**



■ **BAT356**  
Sweep | 180 mm

Transformer  
**00311578**



■ **BAT1018**  
Sweep | 225 mm

Finer  
**60034843**

## ➤ POWER HARROW

---



■ **BAT1088 (left)**  
Power harrow tine

Kredo, Express  
**60096689**



■ **BAT1087 (right)**  
Power harrow tine

Kredo, Express  
**60096691**

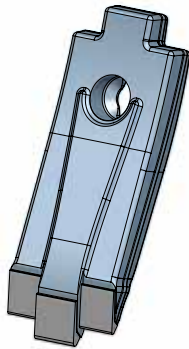




# KERNER

## > CULTIVATOR

---

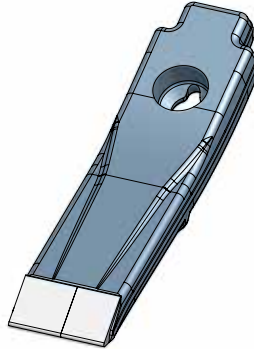


■ **BAT152**

Point | 80 mm

Corona, Galaxis, Komet

**008352**



■ **BAT357**

Point | 55 mm

Corona, Galaxis, Komet  
(for quick change systems)

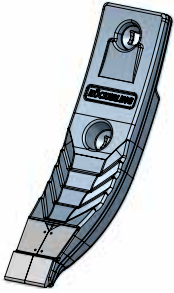
**072820**





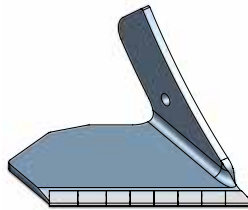
# KÖCKERLING

## ► CULTIVATOR



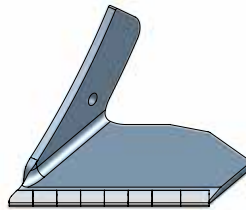
■ **BAT1014**  
Point | 80 mm

Quadro, Trio, Vector  
**915776**



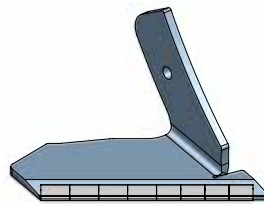
■ **BAT203 (right)**  
Wing share | 262 mm

Quadro, Trio, Vector  
**932214**



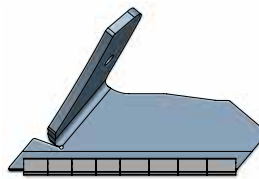
■ **BAT202 (left)**  
Wing share | 262 mm

Quadro, Trio, Vector  
**932216**



■ **BAT396 (right)**  
Wing share | 262 mm

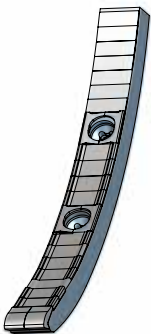
Quadro, Trio, Vector  
**939372**



■ **BAT395 (left)**  
Wing share | 262 mm

Quadro, Trio, Vector  
**939370**

## ► STRIP TILL | SUBSOILER

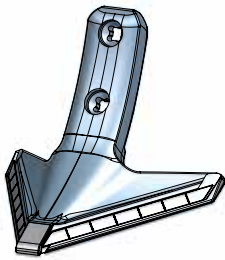


■ **BAT114**  
Point | 40 mm

Quadro, Trio, Vector  
**915774**

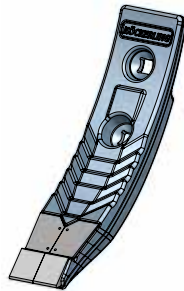
# KÖCKERLING

## ► CULTIVATOR



■ **BAT360**  
Sweep | 226 mm

Vario  
**937658**



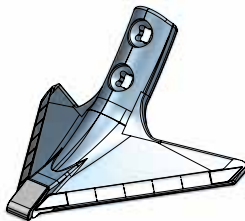
■ **BAT344**  
Point | 60 mm

Vario  
**936464**



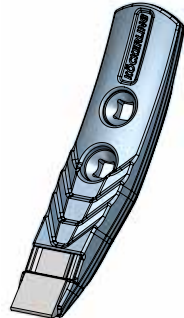
■ **BAT148**  
Point | 60 mm

Vario  
**919430**



■ **BAT359**  
Sweep | 225 mm

Allrounder  
**936742**



■ **BAT488**  
Point | 56 mm

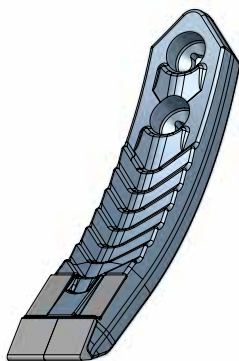
Allrounder  
**915772**





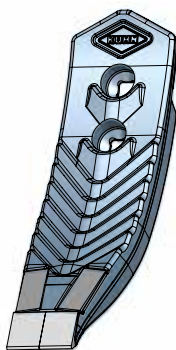
# KUHN

## > CULTIVATOR



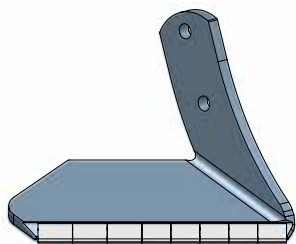
■ **BAT93**  
Point | 50 mm

Cultimer  
**H2225650**



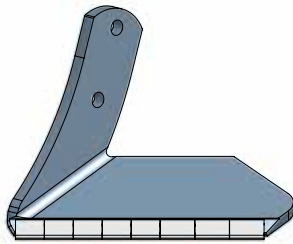
■ **BAT331**  
Point | 80 mm

Cultimer  
**H2251170**



■ **BAT287 (right)**  
Wing share | 224 mm

Cultimer  
**H2218181**



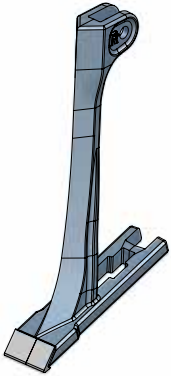
■ **BAT266 (left)**  
Wing share | 224 mm

Cultimer  
**H2218191**



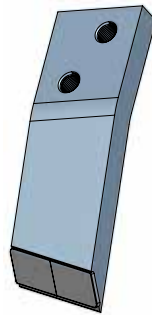
## ► STRIP TILL | SUBSOILER

---



■ **BAT171**  
Point

Gladiator  
**H22474430**

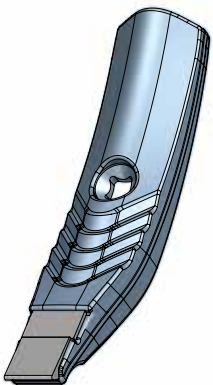


■ **BAT65**  
Point

Cultisoil  
**K1800470**

## ► CULTIVATOR

---

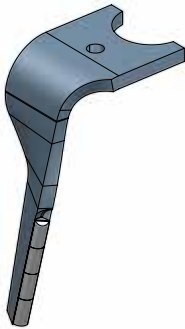


■ **BAT355**  
Point | 55 mm

Prolander  
**H2251900**

# KUHN

## ► POWER HARROW



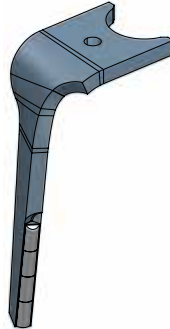
■ **BAT413 (left)**  
Power harrow tine

Series 103/ 1003 and  
104/ 1004  
**K2518450**



■ **BAT412 (right)**  
Power harrow tine

Series 103/ 1003 and  
104/ 1004  
**K2518460**



■ **BAT415 (left)**  
Power harrow tine

Series 1040  
**K2518480**



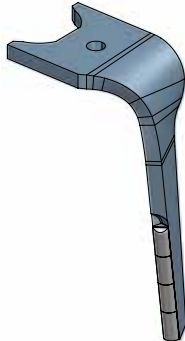
■ **BAT414 (right)**  
Power harrow tine

Series 1040  
**K2518470**



■ **BAT417 (left)**  
Power harrow tine

Series 1020/1030  
**K2518500**



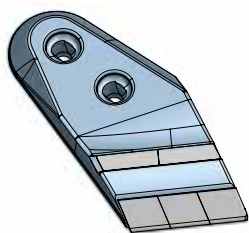
■ **BAT416 (right)**  
Power harrow tine

Series 1020/1030  
**K2518490**





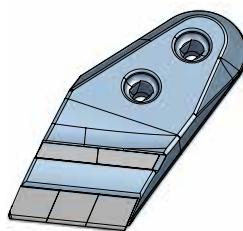
## ► PLOUGH



### ■ BAT341 (right)

Point

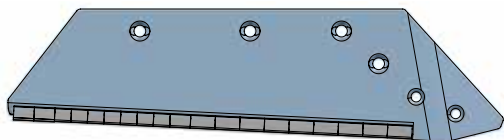
-Master / -Vari / -Challenger Series  
**H0408540**



### ■ BAT347 (left)

Point

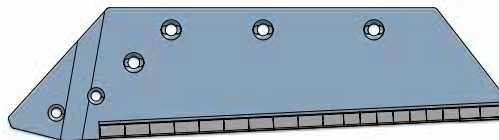
-Master / -Vari / -Challenger Series  
**H0408550**



### ■ BAT332 (right)

Share

-Master / -Vari / -Challenger Series  
**H0404800**



### ■ BAT352 (left)

Share

-Master / -Vari / -Challenger Series  
**H0404810**



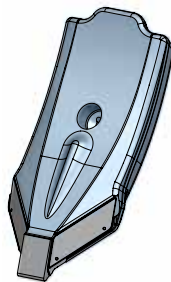
# LEMKEN

## > CULTIVATOR



■ **BAT134**  
Point | 80 mm

Kristall, Karat  
**33710031**



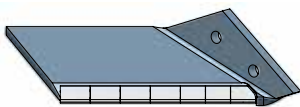
■ **BAT227**  
Point | 115 mm

Kristall, Karat  
**33710030**



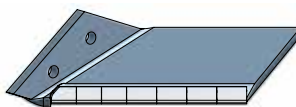
■ **BAT228**  
Point | 60 mm

Kristall, Karat  
**33710023**



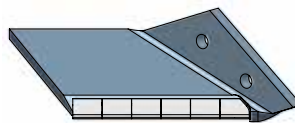
■ **BAT229 (right)**  
Wing share | 300 mm

Kristall, Karat  
**33710098-KF30H RE**



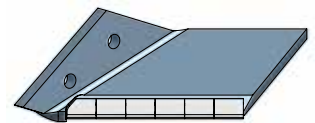
■ **BAT230 (left)**  
Wing share | 300 mm

Kristall, Karat  
**33710099-KF30H LI**



■ **BAT233 (right)**  
Wing share | 250 mm

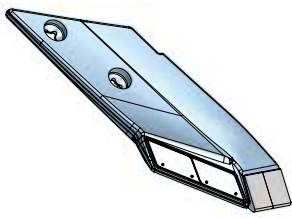
Kristall, Karat  
**33710096-KF25H RE**



■ **BAT234 (left)**  
Wing share | 250 mm

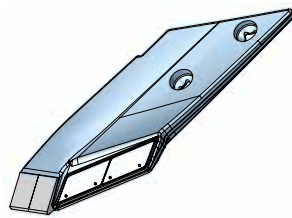
Kristall, Karat  
**33710097-KF25H LI**

## ► PLOUGH



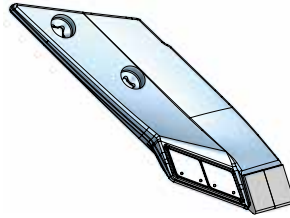
■ **BAT279 (right)**  
Point

Juwel, Diamant, Titan  
**33610026 - C2SHM R**



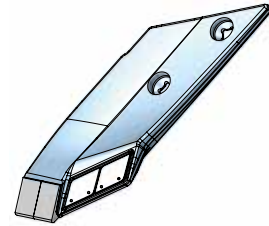
■ **BAT1077 (left)**  
Point

Juwel, Diamant, Titan  
**33610027 - C2SHM L**



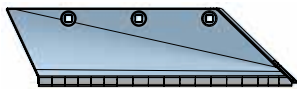
■ **BAT1058 (right)**  
Point

Juwel, Diamant, Titan  
**33610032 - B2SHM R**



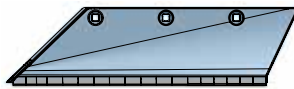
■ **BAT1141 (left)**  
Point

Juwel, Diamant, Titan  
**33610033 - B2SHM L**



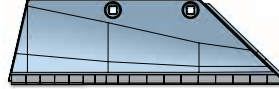
■ **BAT292 (right)**  
Share

Juwel, Diamant, Titan  
**33510016 - SB56HM R**



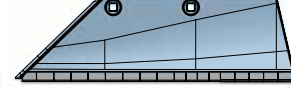
■ **BAT1081 (left)**  
Share

Juwel, Diamant, Titan  
**33510017 - SB56HM L**



■ **BAT1066 (right)**  
Share

Juwel, Diamant, Titan  
**33510024 - SB45HM R**



■ **BAT1090 (left)**  
Share

Juwel, Diamant, Titan  
**33510025 - SB45HM L**

## ► POWER HARROW



■ **BAT316 (right)**  
Power harrow tine

Zirkon  
**33710036**



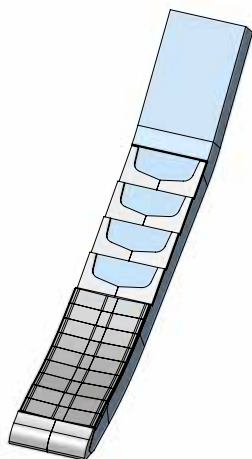
■ **BAT317 (left)**  
Power harrow tine

Zirkon  
**33710037**



# MASCHIO GASPARDO

## ► SUBSOILER



■ **BAT200**  
Point | 70 mm

Attila, Artiglio  
**R17822660**



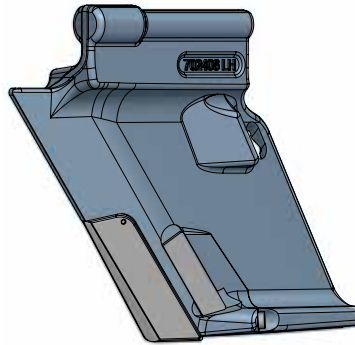
# NOVAG

## ► SEEDING MACHINE



■ **BAT1082 (right)**  
Seeding blade

T-Force Series  
**702407RH**



■ **BAT447 (left)**  
Seeding blade

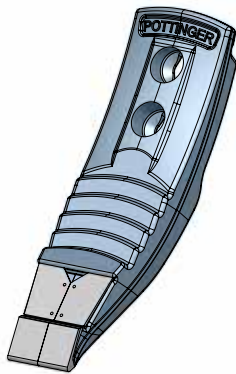
T-Force Series  
**702406LH**





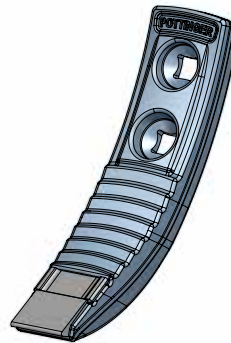
# PÖTTINGER

## › CULTIVATOR I TRACK ERADICATOR



■ **BAT138**  
Point | 80 mm

Synkro  
**9791.50.031.2**



■ **BAT464**  
Track eradicator | 50 mm

Terrasem  
**8504.47.039.0**

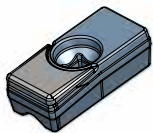


SOURCE: PÖTTINGER



# ROPA

## ► BEETS TECHNOLOGY



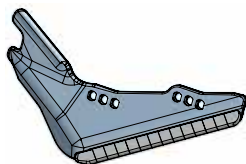
■ **BAT1071**  
Lifting finger

Rübenmaus  
**208003810**



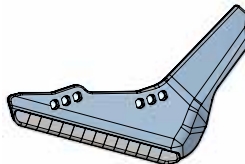
■ **BAT466 (right)**  
Lifter share

Panther, Tiger  
**207019830**



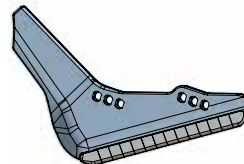
■ **BAT467 (left)**  
Lifter share

Panther, Tiger  
**207019930**



■ **BAT492 (right)**  
Lifter share

Panther, Tiger  
**207020030**



■ **BAT493 (left)**  
Lifter share

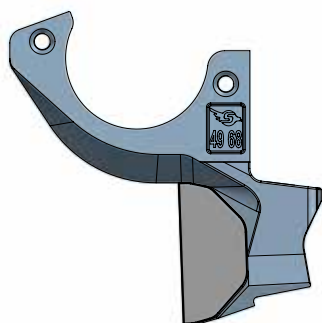
Panther, Tiger  
**207020130**



**ROPA**

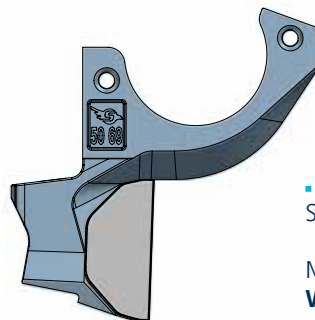
# SULKY-BUREL

## ► SEEDING MACHINE



■ **BAT1068 (right)**  
Seeding blade

Maxi Drill  
**W98568**



■ **BAT1069 (left)**  
Seeding blade

Maxi Drill  
**W98569**



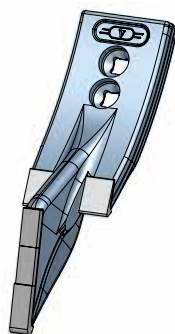
# VÄDERSTAD

## ► CULTIVATOR



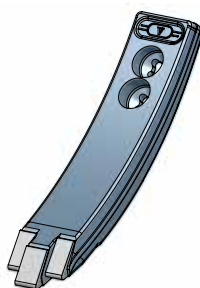
■ **BAT222**  
Point | 80 mm

Cultus, TOP DOWN  
"new", Opus  
**205006**



■ **BAT240**  
Point | 80 mm

Cultus, TOP DOWN  
"new", Opus  
**240180**



■ **BAT75**  
Point | 50 mm

Cultus, TOP DOWN  
"new", Opus  
**498382**



■ **BAT42**  
Point | 80 mm

TOP DOWN  
**498385**



■ **BAT43**  
Point | 50 mm

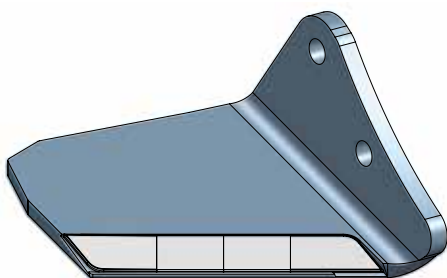
TOP DOWN  
**498384**





# VÄDERSTAD

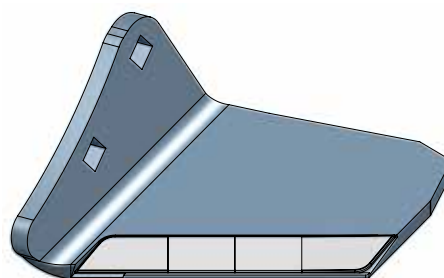
## > CULTIVATOR



■ **BAT38 (right)**

Wing share | 157,5 mm

Cultus, TOP DOWN  
**475000**



■ **BAT37 (left)**

Wing share | 157,5 mm

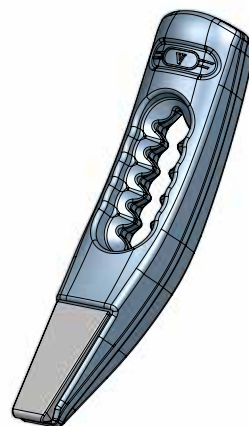
Cultus, TOP DOWN  
**475001**



■ **BAT235**

Spring tine point | 35 mm

NZA, NZE Rapid, Rexius Twin  
**207053**



■ **BAT330**

Spring tine point | 25 mm

NZA  
**231775**





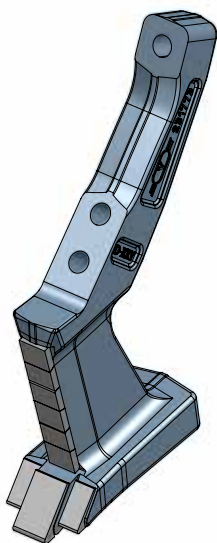




# VÄDERSTAD

## > SUBSOILER

---

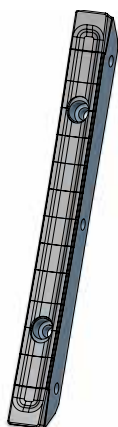


■ **BAT329**  
Point | 60 mm

Opus, TOP DOWN  
**231773**

## > STRIP TILL

---



■ **BAT105**  
Strip till share

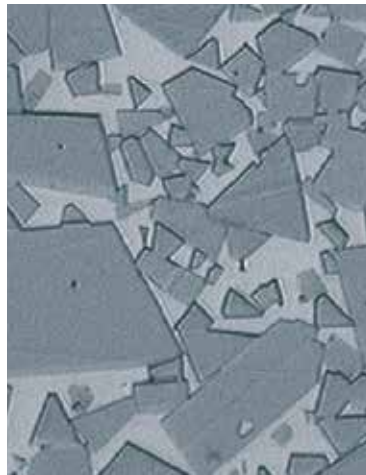
Spirit  
**190101**



# TUNGSTEN CARBIDE IS NOT JUST TUNGSTEN CARBIDE

High levels of hardness in combination with optimum durability and aligned to the specific purpose ensure the tools have exceptional life time.

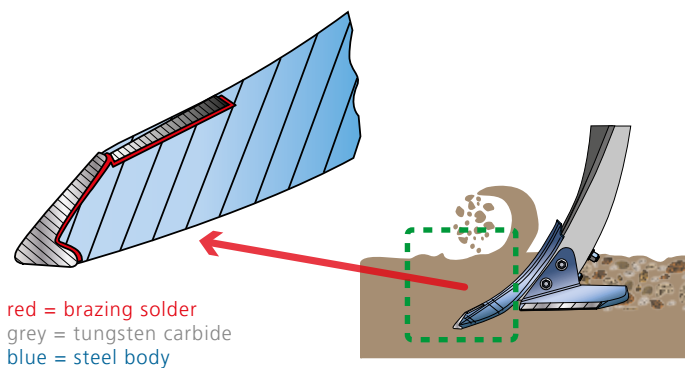
Since best quality comes first at BETEK, we only use the highest quality and purest raw materials.



## ► BRAZING

### TUNGSTEN CARBIDE AND STEEL – TIGHTLY BONDED FOR THE TOUGHEST REQUIREMENTS

The key components of BETEK tools are tungsten carbide and steel: Tungsten carbide for the wear-resistant cutting edge and the additional protection of the steel body, steel for the base body. To permanently connect the two materials, innovative processes and special brazing facilities have been developed at BETEK. The brazing of the two materials occurs under the continuous monitoring and documentation of the manufacturing parameters.



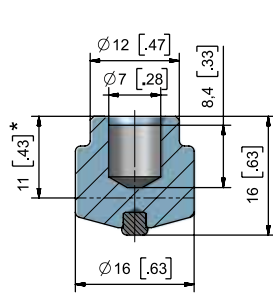
Brazing as the permanent connection of tungsten carbide and steel

# EXTENSIVE WEAR PROTECTION

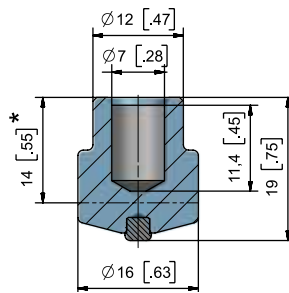


## ► OVERVIEW

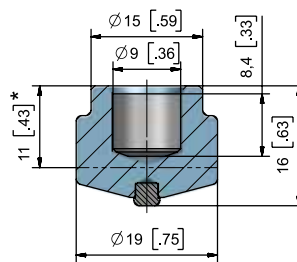
BETEK can provide the appropriate stud welding machine for the Tung-Studs wear protection system.



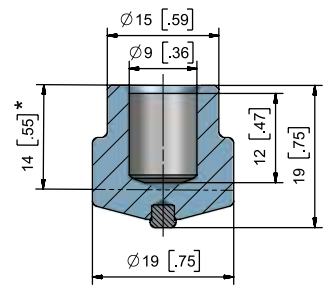
■ **BTS01** BTSD16/16 



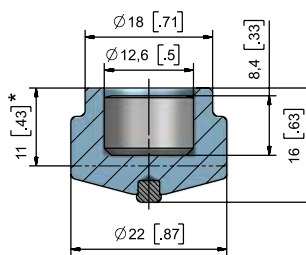
■ **BTS02** BTSD16/19 



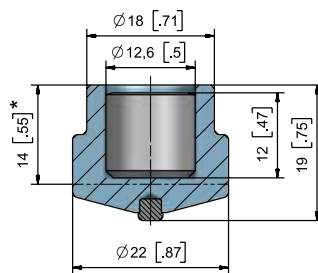
■ **BTS03** BTSD19/16 



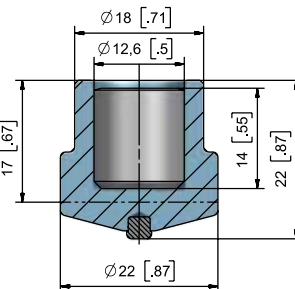
■ **BTS04** BTSD19/19 



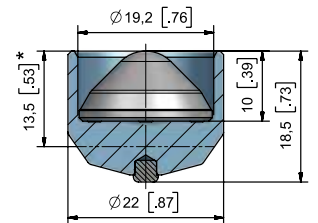
■ **BTS05** BTSD22/16 




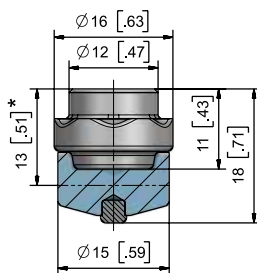
■ **BTS06** BTSD22/19 



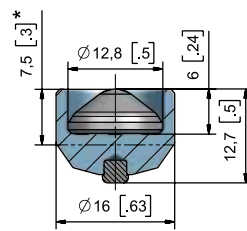
■ **BTS07** BTSD22/22 



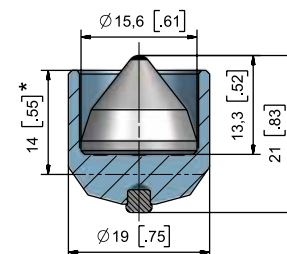
■ **BTS08** BTSD22/18,5SG 



■ **BTS10B** BTSD16/18B 



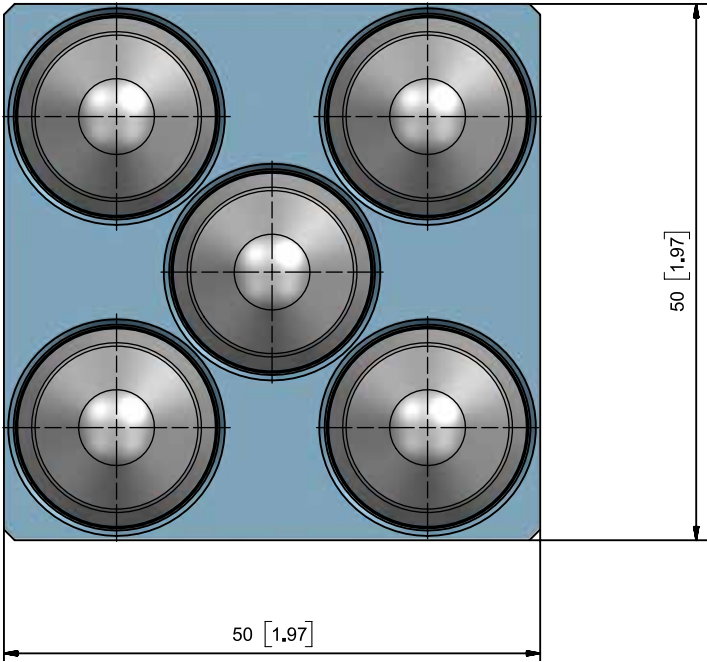
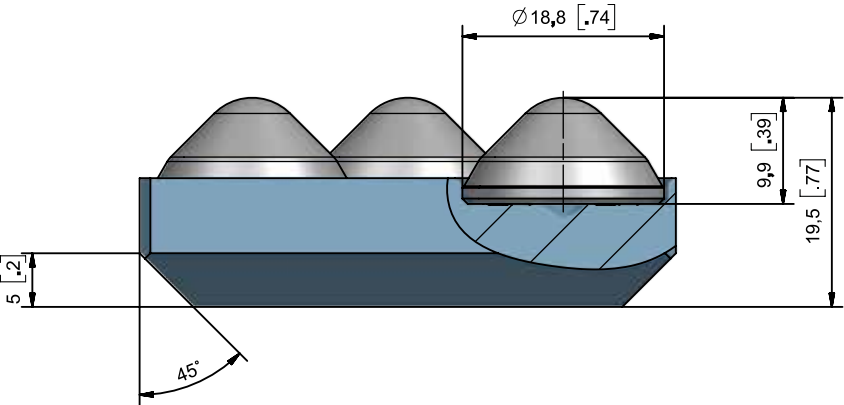
■ **BTS20** BTSD16/12,5SG 



■ **BTS100** BTSD19/15,6SG 

\*Height after welding

➤ **BTS-PLATES**



**DIMENSIONS**

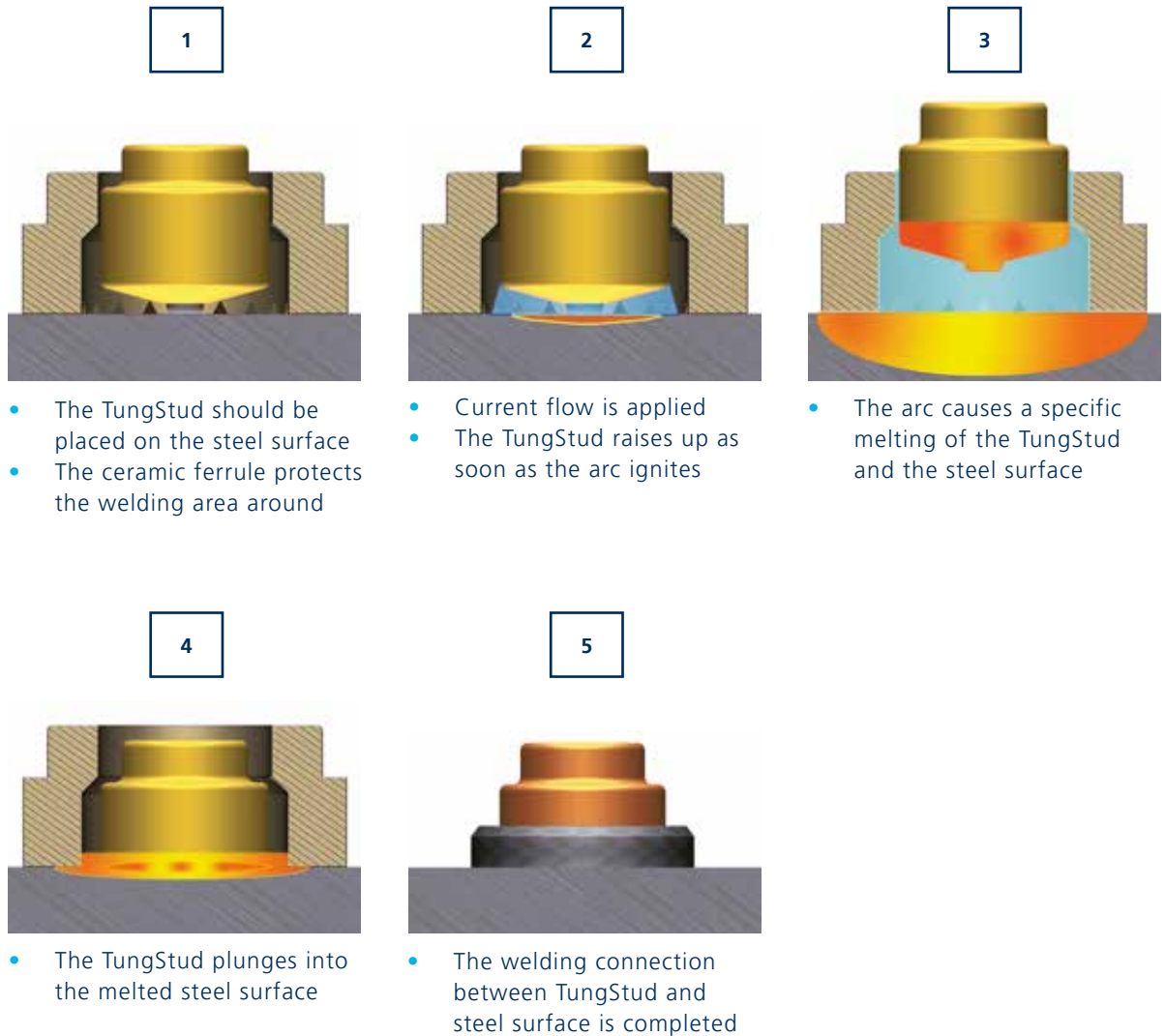
Width in mm	Length in mm
50	50
75	75
100	100
125	125
150	150

Other sizes on request



# TUNGSTUDS

## › WELDING PROCESS



### BENEFITS

- Wear resistant thanks to the carbide core
- Quick welding process
- Suitable for uneven surfaces
- Simply replaceable
- Less maintenance › Higher productivity
- Less downtime › Cost reduction

# PERFORMANCE

## › CUTTING WEAR PROTECTION

---

- Grid pattern is recommended
- Cutting wear protection due to the conical carbide shape

### EXTENSIVE WEAR PROTECTION



## › ROCK BOX EFFECT

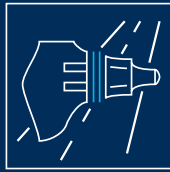
---

- Grid pattern is recommended
- Rock Box Effect due to the cylindrical carbide shape

### EXTENSIVE WEAR PROTECTION



# **BETEK**



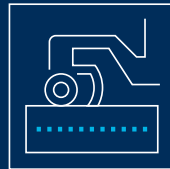
## **SURFACE TECHNOLOGIES**

- ROAD MILLING
- SURFACE MINING
- STABILISING



## **UNDERGROUND TECHNOLOGIES**

- FOUNDATION DRILLING
- MINING
- TRENCHING
- TUNGSTUDS
- DRUM CUTTERS



## **ENVIRONMENTAL TECHNOLOGIES**

- AGRICULTURE
- GRADER TOOLS
- FORESTRY & RECYCLING



## **INDUSTRIAL TECHNOLOGIES**

- CRUSHING & MIXING
- TUNGSTEN CARBIDE
- RAIL TRACK CONSTRUCTION
- INDUSTRIAL SOLUTIONS



## **SITEK** A BETEK BRAND

- TIRE STUDS
- SCARIFIER CUTTERS
- POLE TIPS
- HORSESHOE TIPS



Service number  
+49 (0) 7422. 565-0

info@betek.de  
**www.betek.de**